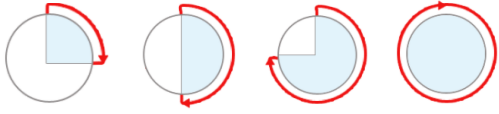


Maths - Year 3

Geometry 2: Identifying and comparing angles by size

Key Vocabulary

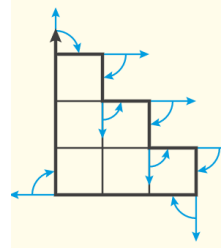
Angle	An amount of turn or rotation.
Clockwise	The same direction as the hands on a clock move.
Anti-clockwise	The opposite direction as the hands on a clock move.
Right angle	An angle of exactly 90 degrees.
Quarter/half/three-quarter/full turn	
Perpendicular	At right angles, e.g. perpendicular lines are lines at right angles to each other.
Parallel	Lines that remain the same distance apart and never touch.
Polygon	A flat, geometric shape with straight sides.

Mathematical Skills

- Understand an angle in terms of an amount of turn and as an amount of space which create the angle, and to quantify its size in terms of right angles and fractions of a full turn.
- Compare angles and recognise when they are smaller than, equal to, or greater than a right angle.
- Order angles by size.
- Identify the angles in a polygon and compare their sizes, recognising this as a property of the polygon.
- Begin to recognise whether a polygon is regular or irregular.

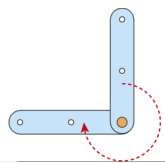
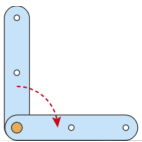
Mathematical Methods

- Create instructions for making a journey around a shape e.g.

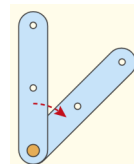


	Clockwise quarter turn	Anticlockwise quarter turn
	Turn 1	Turn 3
	Turn 2	Turn 5
	Turn 4	
	Turn 6	
	Turn 7	
	Turn 8	
Total	6	2

- Linking turns and angles, and comparing the size of angles To a right angle.



Bigger than a right angle.

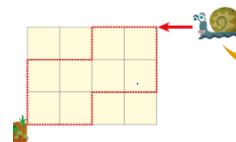


Smaller than a right angle.

- Identifying types of angles in triangles and four-sided shapes, comparing to the size of a right angle.
- Identifying regular and irregular polygons e.g. regular polygons have equal sides and angles.

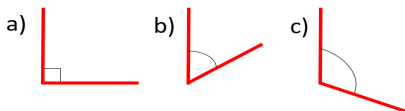
Can you..?

- Write instructions for the snail to follow this shape.



I can only move forwards and make right angle turns.

- Describe these angles:



- Colour the regular polygons.

